

# Spot® Cam 2

The Spot Cam 2 payload turns Spot into a powerful inspection tool with compact purpose-built cameras.

Use Spot Cam 2 to get eyes on remote or hazardous environments. Packed with optical and thermal cameras and an accessory bay for additional sensors, Spot Cam 2 enables you to aim sensors at Spot's surroundings for accurate inspections.

210°



## Features



Integrated radiometric thermal camera



Spherical camera (360 x 135° view)



Pan-tilt-zoom (PTZ) camera with 25x optical zoom



Eight LED lights provide illumination in dark environments



Accessory bay for attaching additional sensors



Durable casing for crash protection



Protected cabling and sealed electronics



Option for front or rear mounting



Compatible with Spot Arm (requires riser attachment)

Boston Dynamics



## Specifications

### DIMENSIONS

**Length** = 22 cm (8.7 in)  
**Width** = 25 cm (9.8 in)  
**Height (Stowed)** = 27 cm (10.6 in)  
(33 cm with riser) (13 in)  
**(Maximum)** = 41 cm (16.1 in)  
(47 cm with riser) (18.5 in)  
**Weight** = 9.5 kg (20.9 lbs)

### 360° CAMERA

**Field of View (FoV)** = 360° x 135°  
**Resolution** = 3000 x 1500 px  
**Video Frame Rate** = 30fps  
**Storage** = NVME SSD 480GB  
**Video Streaming** = 1080p over WebRTC (RTSP coming)  
**File Size** = 2-8MB or higher  
**Still Image Format** = JPEG or Raw

### PTZ CAMERA

**Horizontal FoV** = 58.1° (wide) to 2.3° (tele)  
**Camera Sensor Size** =  $f = 6.5$  mm (wide) to 162.5 mm (tele), F1.6 to F4.8  
**Pan Speed** = 360°/s  
**Pan Range** = 360° continuous rotation  
**Tilt Range** = -30° to 90°  
**Video Frame Rate** = 30fps  
**Resolution** = 4k  
**Optical Zoom** = 25x  
**Pointing Accuracy** = 0.1°

### IR CAMERA

**Scene Dynamic Range** = Up to 500°C (low gain)  
**Video Frame Rate** = 9fps  
**FoV** = 50°  
**Image Resolution** = 640 x 480 px  
**Accuracy** = Radiometric  $\pm 5^\circ\text{C}$  or less, depending on operating conditions  
**NETD** = 60 mK

### ACCESSORY BAY

**Tilt Range** = -30° to 180° (210° full range of motion)  
**Port Data & Power** = Ethernet + 48V bus

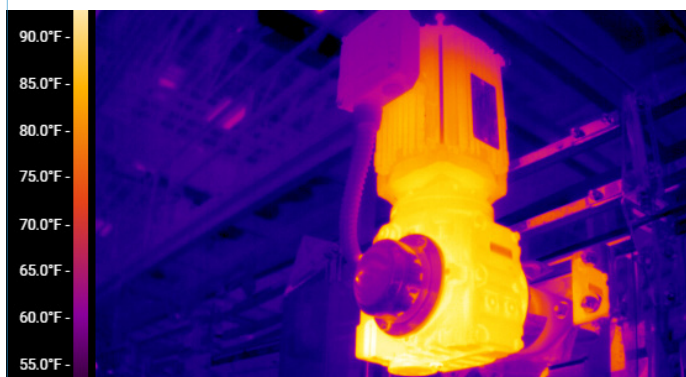
### AUDIO

**Input** = 2 microphones mixed to single channel

### ENVIRONMENT

**Ingress Protection** = IP67  
**Operating Temperature** = -20°C to 55°C

## Image Samples (IR, 25x Optical Zoom, 360° Color Panorama)



Spot Cam2-SalesSheet-11/24/25

## Contact

[sales@bostondynamics.com](mailto:sales@bostondynamics.com)  
[www.bostondynamics.com/products/spot/payloads](http://www.bostondynamics.com/products/spot/payloads)

BostonDynamics

